

**Height adjustment**

Once in situ, the folding façade can be easily height-adjusted by about 6 mm - which is important if settling of the building occurs

**Safe operation**

The entry / exit panel (in the case of an odd number of panels) can be secured by means of a special catch and can thus be carried along safely with the moving façade

**Security and comfort**

The integrated multipoint locking system and the comfortable door handle with catch bolt, lock and profile cylinder ensure high security

**Design**

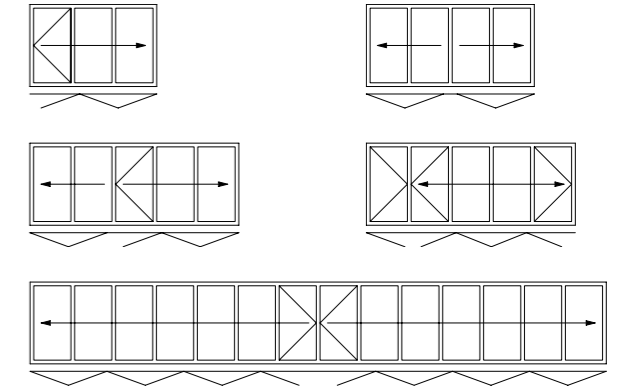
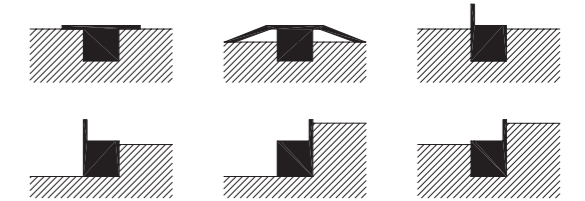
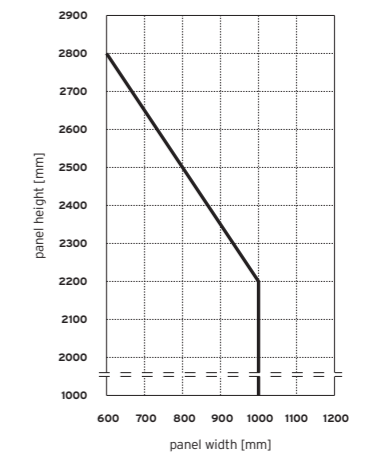
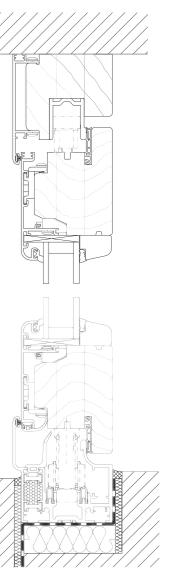
Softline profile and attractively designed hinges contribute to an elegant overall impression



## Specification for SL 67 Folding Façade

**Examples in plan view / configuration variants**

Available as floor mounted (standard) or top hung folding façade. Can be folded outward, inward, to the left or to the right - as required.

**Examples of floor track detail****Panel size chart****Vertical section****Maximum panel sizes**

- | 1000 x 2200 mm
- | 600 x 2800 mm
- | Panel weight up to 70 kg
- | Special sizes on request

**Total element width**

- | 14 m for floor mounted version
- | Unlimited for top hung version

**Heat insulation**

Timber profiles with vented aluminium cladding on the outside afford best weather protection and heat insulation according to the latest energy conservation regulations (EnEV)

**Engineered**

Stainless steel runners and tracks ensure effortless sliding action of the folding façade



Easy to open and to close

**Width adjustment**

The width of the panels can be adjusted easily by adapting the hinges (patented) with a screwdriver

**Stability**

Espagnolettes with 24 mm throw lock the panels into the top and bottom track of the frame ensuring they withstand gales and afford high security

